

Delving into Heritage Webinar Series 2021

Historic Parklands in Greensand Country

The Greensand Country Landscape Partnership is delighted to announce a series of x4, free of charge evening webinars exploring the theme of Historic Parklands at landscape level.

Please send your name and email address to eloise@greensandcountry.com to book your place. Please specify which webinar/s you wish to attend.



Presenter Profiles and Presentation Outlines

1/4 The Landscape 'Canvas': The Unique Geology and Ecology of Greensand Country Monday 3rd May. 7:15pm login for presentations to start promptly at 7:30pm

The first webinar in the series looks at the foundation 'layers in the landscape' of geology and ecology in Greensand Country upon which Historic Parklands have clustered. There will be two presentations delivered by Bev Fowlston (Beds Geology Group) and Derek Niemann (Smallwoods Magazine Editor and a country diary writer for the Guardian):

Bev Fowlston

Bedfordshire Geology Group

Bev Fowlston is an amateur geologist with an interest in all Earth Sciences. She has worked as a volunteer for Bedfordshire Geology Group since it began in 2004. Bev gained her BSc at Durham University and her MSc at The Open University. During her time with BGG, Bev has researched and developed several information leaflets about Bedfordshire's geology.

The Geology of Greensand Country

Greensand Country is a geological area from which distinctive habitats and heritage arises in contrast to the surrounding landscapes. We explore the unique geology of this area which directly relates to Greensand Country landscape having the highest concentration of historic parklands in the country.

Derek Niemann

Writer and Smallwoods Magazine Editor

Long term Bedfordshire resident Derek Niemann began a career in conservation with the Wildlife Trust in 1986 as a Development Officer. Three years later, he left for the RSPB and stayed there for 25 years. Since 2014, Derek has been a freelance writer, editor and teacher of creative writing for the University of Cambridge's Institute of Continuing Education. He is the author of three books of adult non-fiction, including A Tale of Trees: The Battle to Save Britain's Ancient Woodland. Derek is the editor of Smallwoods Association magazine and a country diary writer for the Guardian

Orchids in the Mud: The Greensand Ridge in an Ancient Woodland Story

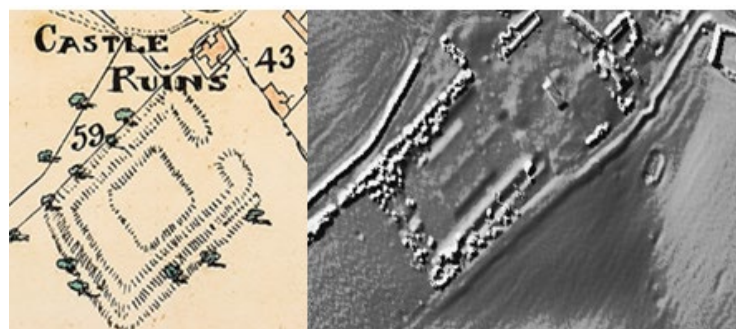
Britain's ancient woodlands were devastated during the second half of the 20th century, a period that saw more than a third of them lost. What were the factors that caused this calamity to happen and what impact did it have in Greensand Country? Writer Derek Niemann pieces together what happened both national and locally and finds out what documents from the past and evidence from the present tells us about the woodlands that are with us today. What are the clues that help us to read the history of the wooded landscape? This is a journey that relies on trees, plants, names, shapes, symbols, hypothesis and imagination.

2/4 Taking the Long View: Parkland Creation in Landscape Context.

Tuesday 11th May. 7:15pm login for presentations to start promptly at 7:30pm

The second webinar in the series looks at the historic development of parklands. The presentation will be delivered by Dr Twigs Way, a professional researcher and writer.

<p>Dr Twigs Way Researcher, Writer, Speaker and Consultant</p>	<p>Taking the Long View: Parkland Creation in Landscape Context.</p>
<p>Twigs Way is a professional researcher and writer fascinated by the past and intrigued by the role of flower, gardens and landscape in art and culture of all kinds. Her work explores themes of symbolism and meaning, class and gender, art and literature ... and she enjoys following lesser known paths in garden history towards the unexpected. Her original work was on the history of women in the garden and she retains an active research interest in this topic. Recent publications include the art and culture of specific flowers including the carnation and the daffodil and her book on the Chrysanthemum in Art and Culture was published in October 2020 by Reaktion Press, and she is currently working on the Daffodil in Art and Culture.</p>	<p>Discussion of parklands often focusses on the history of a single park, or perhaps a group with a shared designer or defined style. This talk aims to broaden that approach to take in the wider context of the park as a cultural entity reflecting the social and political context of the millennia from the first private parklands of the 11th century through to the public spaces of the 19th century. What is the relation between park creation and social power structures? What was the impact of the dissolution or enclosure? Can we detect a pattern of scale or style that responds to external landscape change or population pressures? A thought provoking and wide ranging talk on the concept and context of the parkland in social history.</p>
<p>3/4 Humphry Repton in Greensand Country Wednesday 19th May. 7:15pm login for presentations to start promptly at 7:30pm</p>	
<p>The third webinar in the series groups together parklands across Greensand Country which have been influenced by Repton. The presentation will be delivered by Felicity Brimblecombe, Beds Garden Trust.</p>	
<p>Felicity Brimblecombe Beds Garden Trust</p>	<p>Humphry Repton in Greensand Country</p>
<p>Felicity Brimblecombe is an active member of Beds Garden Trust with an MA specialising in gardens and parklands in Bedfordshire. Following retirement from scientific research and teaching, Felicity started as a gardener on a project to rejuvenate a walled garden at the Luton Hoo Estate. She then changed to research and specialised in researching the gardeners who worked on the estate.</p>	<p>Woburn Abbey, The Hazells, Moggerhanger Park and Battlesden Park are the main locations in Greensand Country where Repton was called in. What did he advise? What was completed? What remains?</p>
<p>4/4 A Virtual Whistle-Stop Tour of Garden History in Greensand Country Friday 28th May. 7:15pm login for presentations to start promptly at 7:30pm</p>	
<p>The last webinar in the series is a light-hearted pictorial miscellany of a wide variety of garden history in Bedfordshire to remind us of places we have been and perhaps discover new places to visit. The presentation will be delivered by Felicity Brimblecombe, Beds Garden Trust</p>	
<p>Pictures, paintings, postcards, diaries, maps etc. are used to illustrate that garden history covers gardens big and small from Wrest Park to allotments and looks at items in garden landscapes from walled gardens to sun dials.</p>	



Go to www.greensandcountry.com for more information about these and other events being held during the Greensand Country Festival throughout May 2021

